

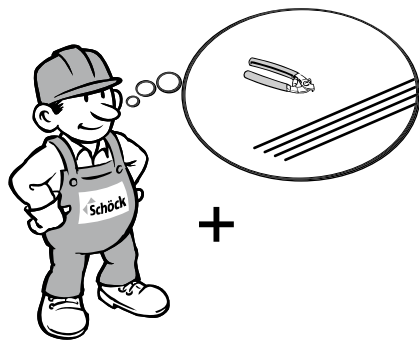
Schöck Isokorb® T Typ C



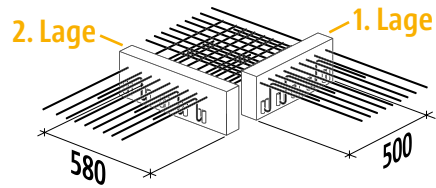
T
Typ C

Stahlbeton – Stahlbeton

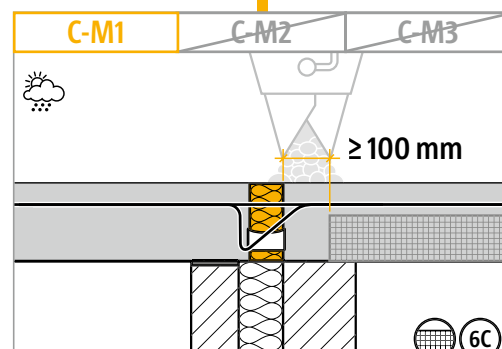
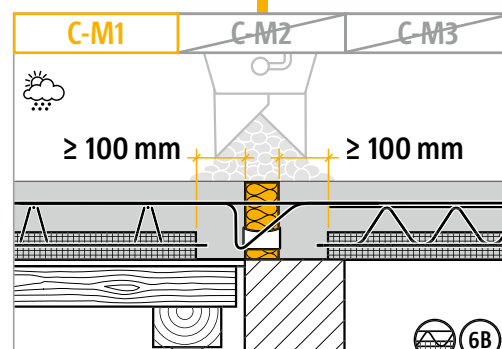
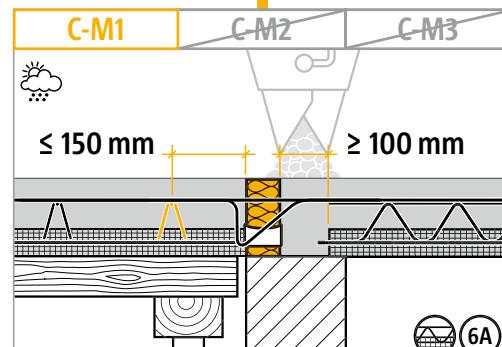
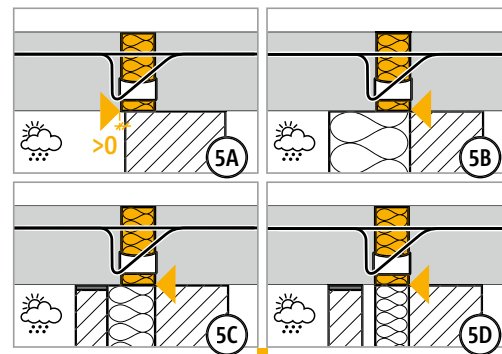
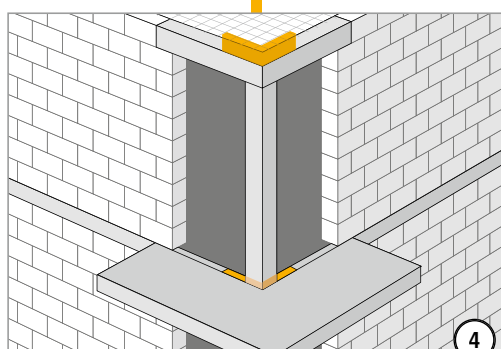
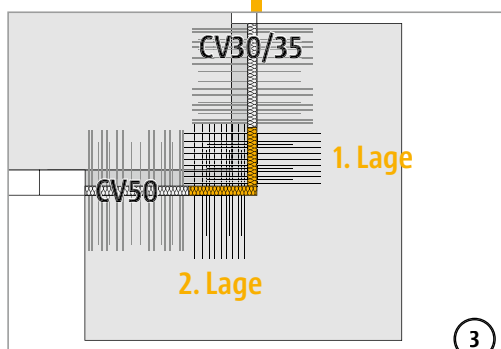
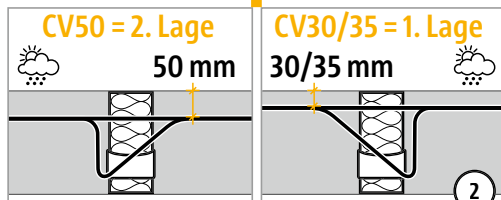
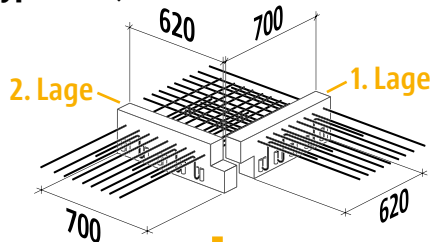
Einbauanleitung



T type C-M1

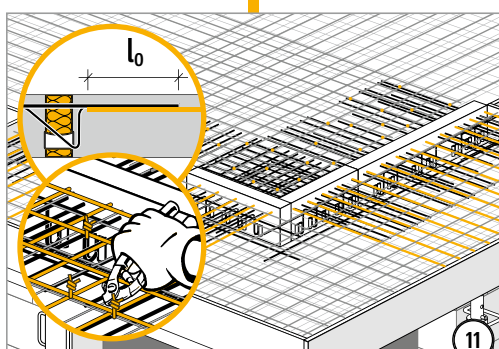
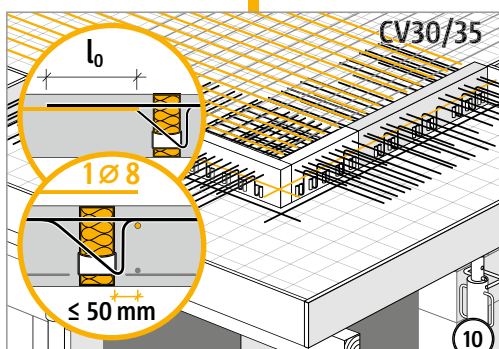
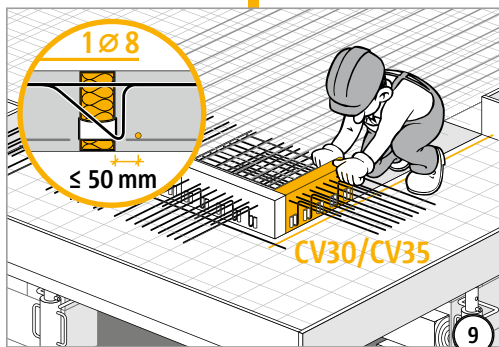
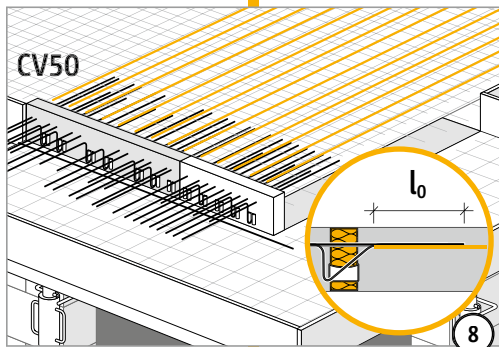
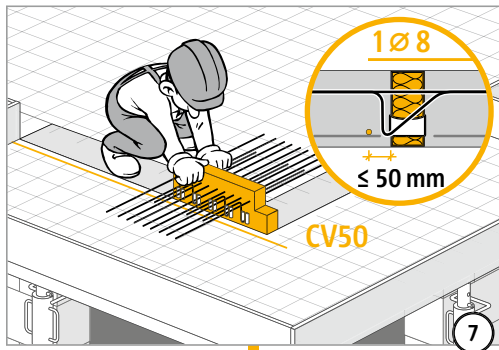


T type C-M2, C-M3



(6A) – (6C) Druckfuge unbedingt mit Ortbeton verfüllen! Fugenbreite ≥ 100 mm.

Einbauanleitung

T
Typ C

Stahlbeton – Stahlbeton

